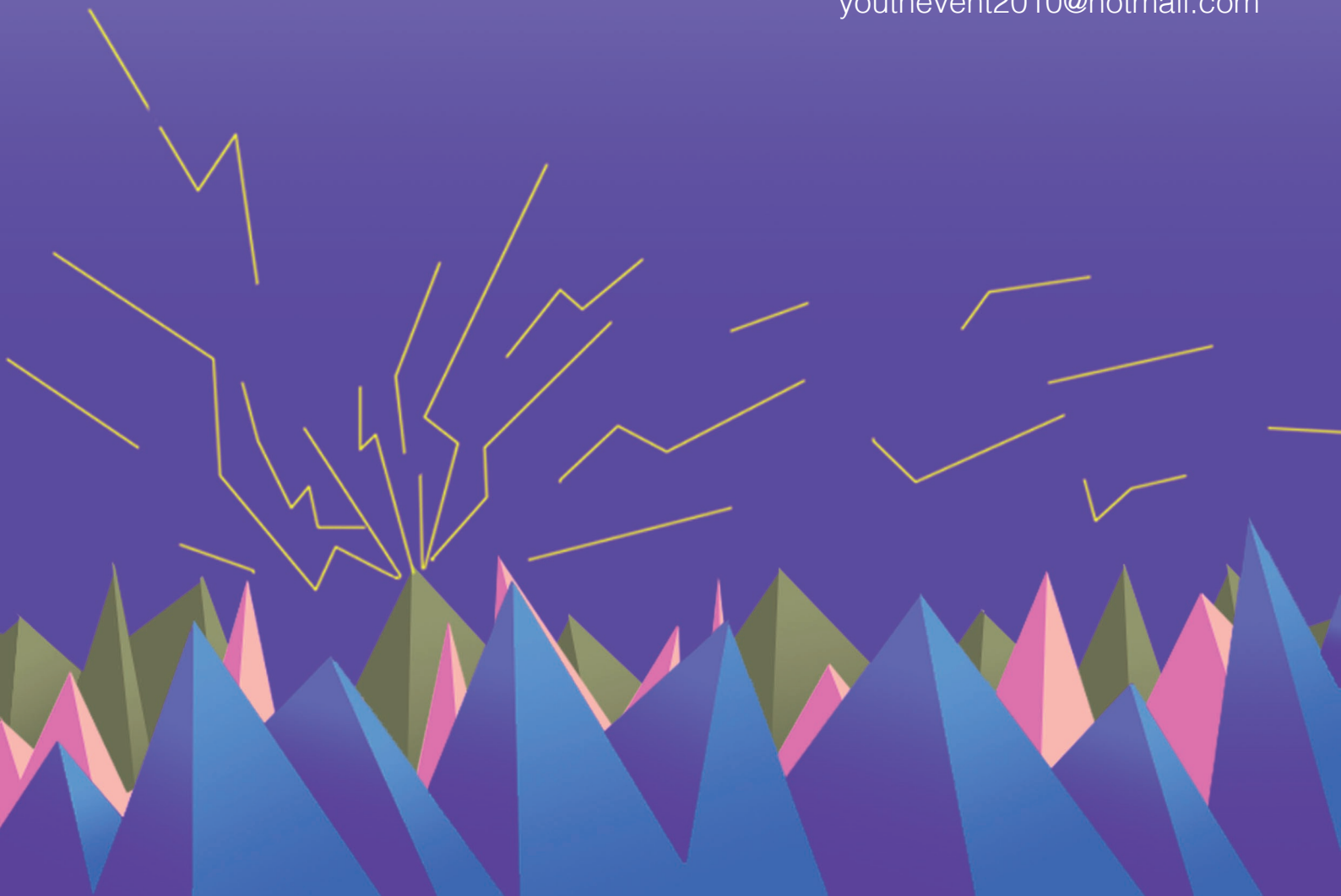




Gracefest 2010
17th - 18th July

Information Pack

<http://www.gracefest.org.uk/>
youthevent2010@hotmail.com



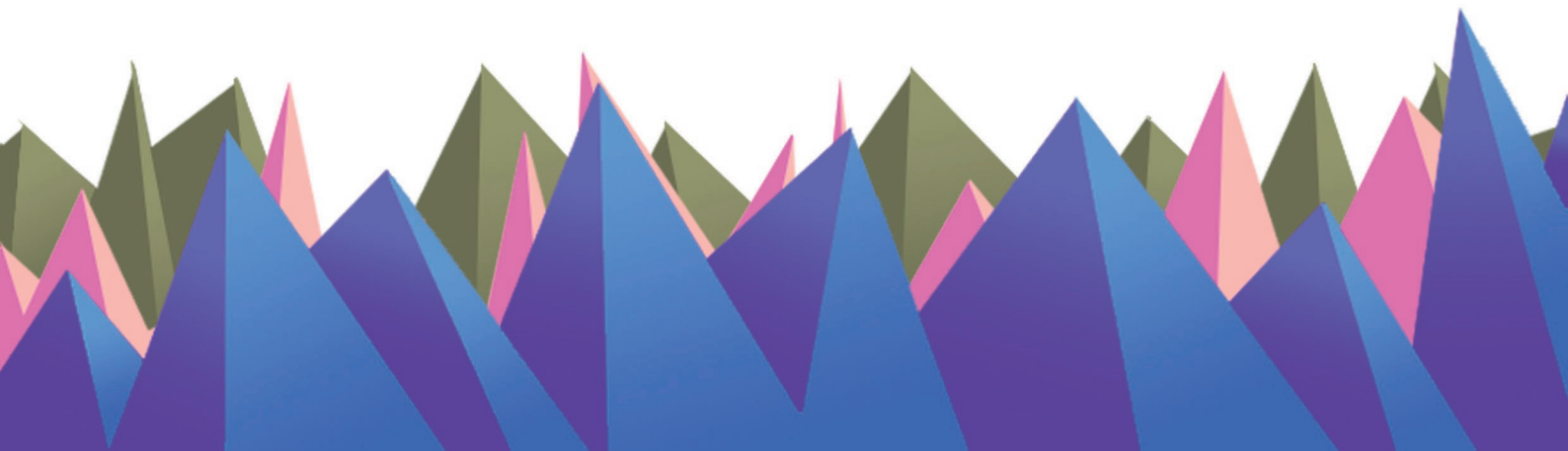
17th - 18th July 2010, Ripon Cathedral, £5, ages 14-21



Contents

3. Theme
4. Vision
5. Core Team
6. Target Audience
7. Festival Site
8. Cathedral Venues
9. Other Venues
10. Programme
11. Line Up
12. Campsite
13. Health & Safety
14. Booking Form
15. Contact Details
16. Back Page

Welcome to Gracefest 2010. We hope you are excited about the return of this dynamic and innovative youth festival. This information pack should contain all you need to know about Gracefest.





Theme

Isaiah 40:29-31

He gives strength to those who are tired and more power to those who are weak.

Even children become tired and need to rest, and young people trip and fall. But the people who trust the Lord will become strong again.

They will rise up on wings like eagles; they will run and not grow weary, they will walk and not become tired.



17th - 18th July 2010, Ripon Cathedral, £5, ages 14-21

Vision



Mission Statement

To run a festival to challenge preconceptions of Christians and the Christian faith, and make the faith more accessible to non-Christians.

Aims

- To be the first step for non-Christians to make contact with the Christian faith.
- To enable Christians to explore and share their faith among new people.
- To create better networking between Christian organisations in Harrogate, Ripon and Leeds.
- To cross social boundaries by attracting a wide range of people.
- To be fully ecumenical, attracting people from all churches as well as those who have no ties with churches.

Execution

We will carry out these aims by:

- Investigating running community projects- how are organisations already engaging with young people? We hope to invite some of them to run workshops.
- Inviting a range of speakers who can share their experiences with everyone attending.
- Signing up a programme of secular and Christian bands.
- Forming a team with representatives from a wide range of denominations and geographical areas.



17th - 18th July 2010, Ripon Cathedral, £5, ages 14-21

Core Team



We are made up of a range of volunteers from churches, schools & organisations across the area who have come together to form Gracefest's core team.

We are:

Jason Lowe: Organiser

Grace Sinclair: Organiser

Dan Watts: St. Mark's CofE, Harrogate

Dave Mason: Gracious Street Methodist, Knaresborough

Jackie Keir: Bilton Youth Cells, Harrogate

Harrogate Methodist Circuit Youth

Janet Henderson: Archdeacon of Richmond

Kathryn Rowe: St. Aidan's School, Christian Union

Laura Goldsborough: Summerbridge Methodist

Mark Twine: Nidderdale Youth

Nic Buxton: Ripon Cathedral

Nic Sheppard: Anglican Youth Work Advisor Ripon & Leeds

Nick Witham: Harrogate Methodist Circuit

Nigel Sinclair: St. Robert's CofE, Pannal

Rick Otto: Holy Trinity Youth, Ripon

Roberta Topham: Harrogate Methodist Circuit

Sue Davis: Bilton Youth Cells, Harrogate



17th - 18th July 2010, Ripon Cathedral, £5, ages 14-21



Target Audience

Age Range

We will be serving young people and students aged 14 to 21. This year, we have decided to expand the age range.

Both Gracefest 2008 and 3135 The Journey catered for 14 - 18 year olds. Many young people who attended those festivals are now over the age of 18, and there are few events to cater for them in the area. We also believe that in order to grow the festival, it is important to expand the age range.

Geographical Area

Gracefest's primary catchment is Ripon & Harrogate/Knaresborough. Our catchment also widens to include parts of the Yorkshire Dales such as Richmond, Masham and Pateley Bridge, as well as into the western part of the York & Hull Methodist District and the York Anglican Diocese. We will also promote the event in North Leeds where possible, however this is a vast area.

Denomination

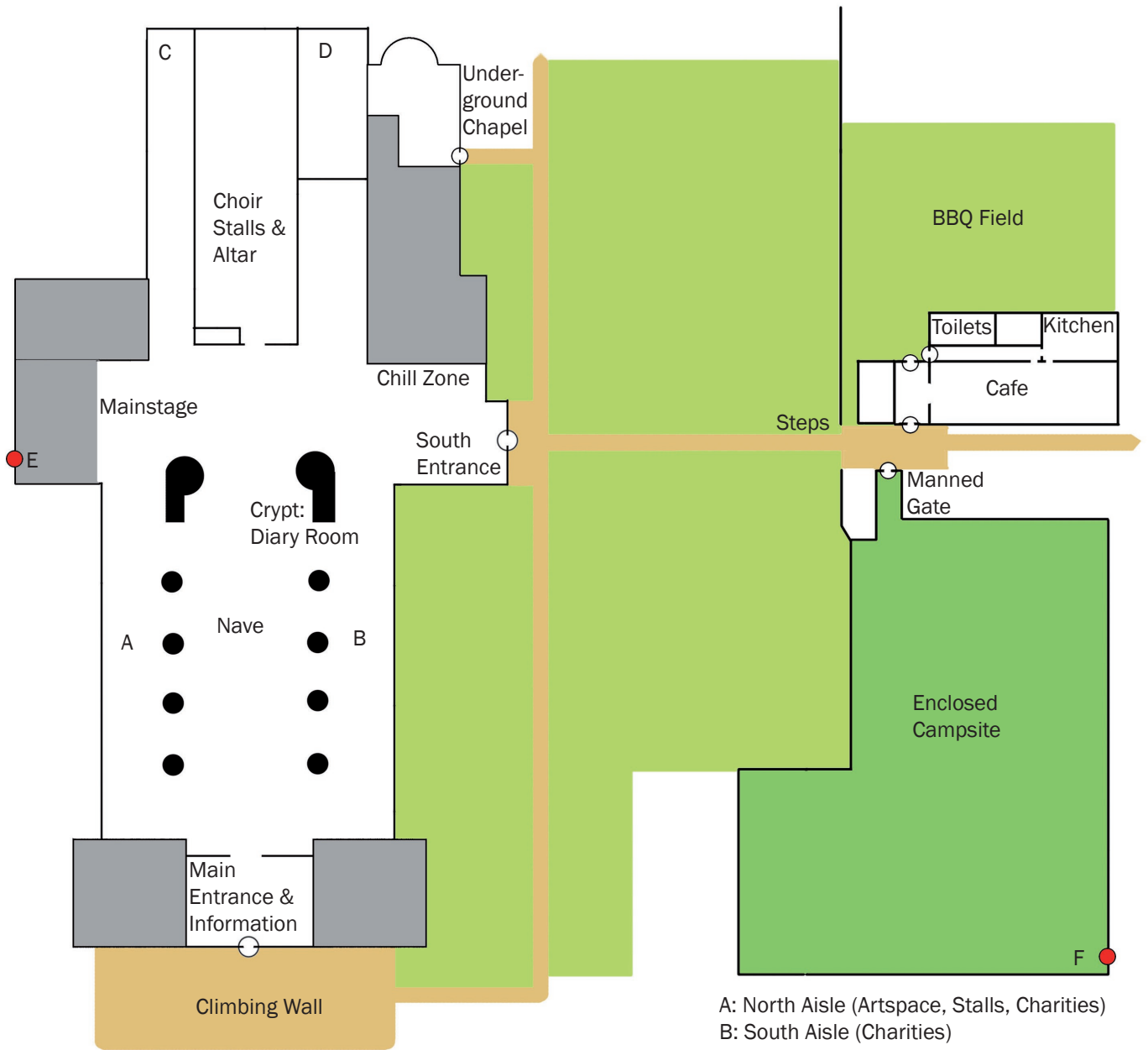
Gracefest is 100 percent ecumenical, here to serve all Christians. Although it will be hosted at Ripon Cathedral, a Church of England Cathedral, it is not a Church of England event. Gracefest is being funded and supported from a number of different denominations, both Protestant and Catholic.



17th - 18th July 2010, Ripon Cathedral, £5, ages 14-21

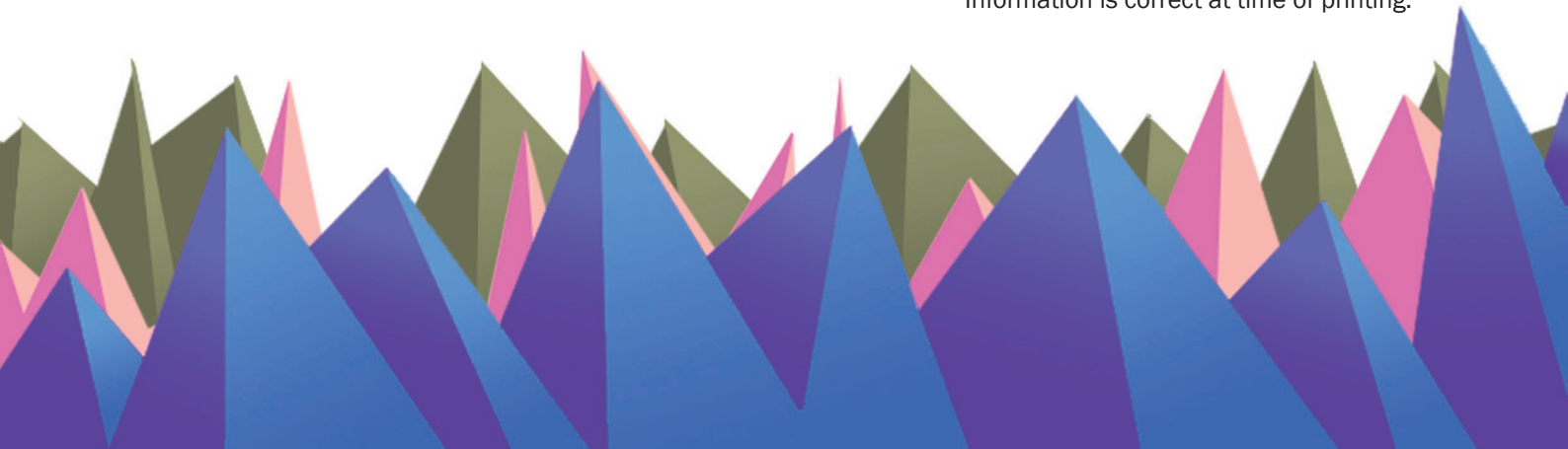


Festival Site



- A: North Aisle (Artspace, Stalls, Charities)
- B: South Aisle (Charities)
- C: Prayer Space
- D: Prayer Space
- E: Emergency Exit & Stage Access
- F: Emergency Exit

Information is correct at time of printing.



17th - 18th July 2010, Ripon Cathedral, £5, ages 14-21



Cathedral Venues

Mainstage

Gracefest's flagship stage will be Mainstage, located inside the Cathedral. It will play host to our headline music act; thebandwithnname on the Saturday night.

During the day, Mainstage will host the headline speakers and events, including Christian comedy writer and speaker Adrian Plass.

Side Stages & Busking

Ripon Cathedral is a large site with several venues within it. We will provide smaller stages in more intimate locations such as the aisles at the side of the Nave for small bands and acoustic sets. We will encourage 'busking' across the weekend too. The smaller stages will be ideal for those who bring their own instruments.

The smaller stages will also be used for late night unplugged sessions after Mainstage has closed.

Crypt

The small underground crypt will be used as a diary room. We will set up a video camera and screen to create a video diary of Gracefest here.

Chapels

There are three chapels in the Cathedral. The most notable of these is under the main Cathedral itself. It is soundproof and can also be accessed from outside, giving direct access to the campsite. It therefore makes an ideal venue for late night worship.

There are two chapels to each side of the Choir/Altar area. These will be open throughout the weekend as prayer and thinking spaces.

Transepts

The North Transept features a side area that is self-contained, yet open to the main space. The South Transept features a balcony area. Both of these areas could be used for video gaming and chill spaces.

Nave

The Cathedral's main space is the Nave. We will use it for charity stands and larger events.

Choir Stalls

We will have our main Sunday service here.



17th - 18th July 2010, Ripon Cathedral, £5, ages 14-21



Other Venues

Cathedral Hall

The Cathedral Hall will be the main eatery at Gracefest. The large majority of catering will take place here.

The Cathedral Hall also offers us a large space outside the Cathedral. It will be possible to use it for workshops if necessary too.

There are toilets within the Cathedral Hall; these will serve the campsite also.

Campsite

The campsite is in the 'Deer Park'. It is a fully enclosed space with one way in and out. There is also a large gate to use as a fire exit on the opposite side of the campsite. We estimate that the campsite can take between 100 - 150 campers, although we will need to designate plots carefully to use the space efficiently. We will also need to make sure campers bring appropriate sized tents for the number of people.

Outdoor Space

Inbetween the Cathedral, campsite and Cathedral Hall, there is a huge amount of outdoor space. We will retain the festival feel between the campsite and Cathedral by installing arts along the path.

We will also use some of the outdoor space, most likely near the Cathedral Hall, for a barbeque.

There will be a climbing wall at Gracefest, most likely located by the south door.



17th - 18th July 2010, Ripon Cathedral, £5, ages 14-21

Programme



Saturday

Saturday daytime will be filled with workshops from the charities involved (Amnesty International, Christian Aid, RETAS & Together4Peace thus far). This will also be the prime-time for acoustic acts and speakers.

The climbing wall and activity areas will all be open to wander round.

We will build up to our flagship Saturday night event, 'Rave in the Nave', a ground-breaking crowd drawer. Live acts including BeBe Vox and headliner thebandwithnoname will provide music during the party, while a Christian cocktail bar serving drinks such as 'Peachy Preacher' and 'Prayer Pop' will be open throughout the evening.

At 23:00, we will wind down in time for unplugged sets, Midnight worship and a late night film.

Sunday

Gracefest's first billed event on Sunday morning is worship in the Cathedral at 11:30. Before this, activity areas will be open and breakfast will be served. Ripon Cathedral will be running its normal schedule of services in the morning, which Gracefesters are welcome to attend. Gracefest will be taking over the 11:30 service, where we will share worship with the regular congregation.

The morning worship will be followed by a barbeque before we close at 15:00.



17th - 18th July 2010, Ripon Cathedral, £5, ages 14-21

Line Up



Worship

There will be ongoing worship throughout the weekend in several different forms. It will be provided by worship bands from across the area.

Music

With popular demand from young people across the area, our headline act is thebandwithaname; one of the biggest Christian bands in the UK.

We have had several young people ask if their band can play at Gracefest. Yes. It is our hope that local bands will fill the programme and bring their followings with them

Action

We are signing up more and more charities every month, but currently we have Amnesty International on board as well as Christian Aid. Together4Peace and RETAS are two secular Leeds based charities that work with refugees & asylum seekers. We are keen to raise the awareness of issues at home as well as abroad through these charities. These charities will have stands lining the aisles at the side of the Nave, as well as run workshops on the Saturday.

Stalls

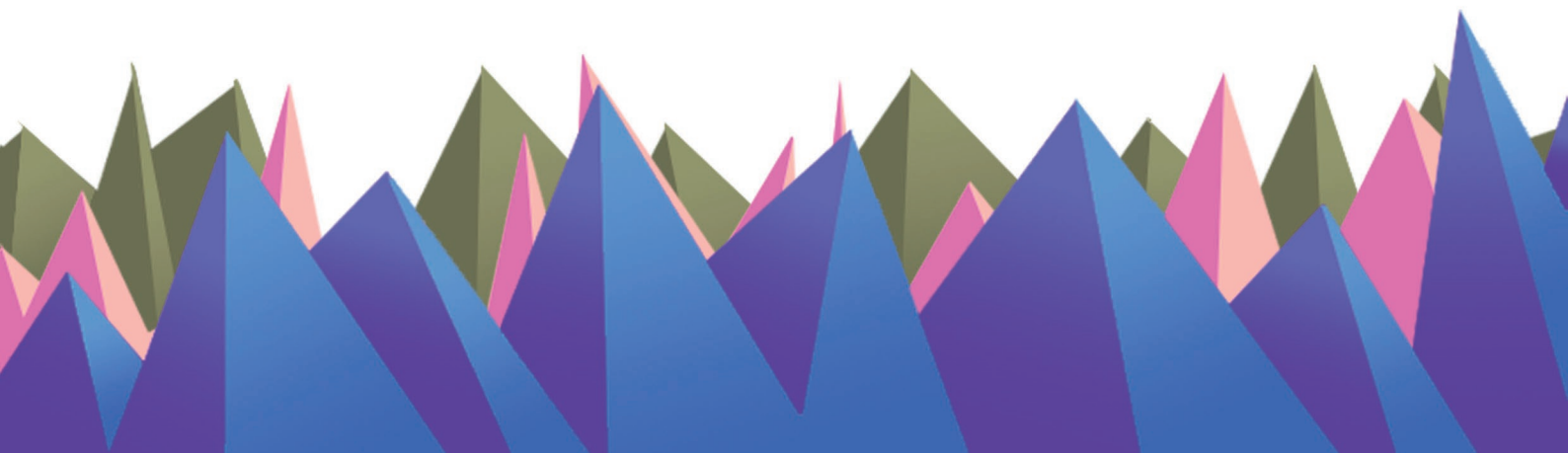
We are happy to have Fairtrade retailer Traicraft on board. Ever popular with their tasty ethical snacks, they will also be selling items of jewellery and accessories.

Christian bookshop Living Oasis, formerly Wesley Owen, will also have a stall at Gracefest selling the latest Christian books and music.

Other

We have questioned how popular speakers are with young audiences, but we feel they have important testimonies and experiences to share. Our most well known speaker at this stage is Adrian Plass, a Christian writer and speaker.

For the more active, a Climbing Wall will be located at the front of the Cathedral during the festival. We will also promote creative spaces for people to express their faith in artistic ways too.



17th - 18th July 2010, Ripon Cathedral, £5, ages 14-21

Campsite



Tents

We have a large, fully enclosed space for camping. It is an ideal site, but we have to use it efficiently due to eventual space constraints. We therefore ask that you specify how large your tent will be and how many people will be sleeping in it. We need to avoid having large tents for one person.

The campsite will be laid out with designated access paths and plots for tents.

Cooking & Water Supply

There will be no stoves on the campsite for safety reasons. All hot food will be prepared in the Cathedral Hall. Therefore, we do not need a water supply to the campsite.

Toilets

The nearest permanent toilets are at the Cathedral Hall. Due to capacity constraints in 2008 however, we are looking at arranging either a toilet block or individual portaloos on the campsite.



17th - 18th July 2010, Ripon Cathedral, £5, ages 14-21

Health & Safety



Context

Gracefest covers a large site with two buildings and several outdoor spaces. It is also in the City Centre, and is bisected by a public thoroughfare. As a place of worship, Ripon Cathedral will be open to the general public during the day as well as Gracefest attendees.

Gracefest will be selling weekend tickets and day tickets. This means we will have people going on and off site throughout the weekend, and it is unfair to say that weekend ticket holders may not leave the site.

Ticketing

Ticketing will be controlled using a system of coloured wristbands. Each colour wristband will correspond to their ticket type; weekend camping ticket, day ticket (no camping), volunteer workers and youth leaders.

We will ask for wristbands at the entry points to each venue to allow us to control who is going into every venue.

CRB

All Gracefest staff will be CRB checked.

Security & Safety

Young people will be allocated a festival host. In most cases, the festival hosts will be their youth leaders, however we are conscious not to exclude those who are not from youth groups from Gracefest. The young people do not have to stay with their host, but they will be given the host's phone number.

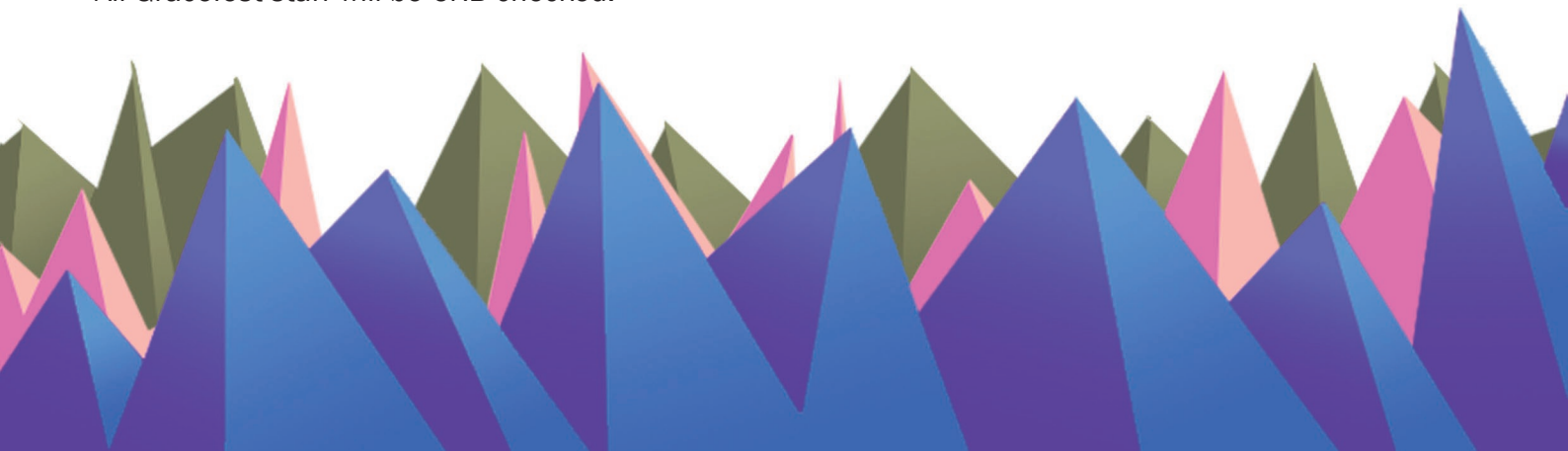
During the day, there are three entrances to the site; Cathedral Hall, Main Cathedral Entrance and entrance to the Cathedral grounds adjacent to the main Cathedral entrance. At each of these sites, we will ask people to sign in and out. At night, the only entrance will be the campsite entrance which will be staffed overnight, where people will also have to sign in.

Harrogate Town Pastors have kindly agreed to assist with security during Gracefest. We will also be informing the local police of the event.

There will be a health & safety officer on site.

First Aid

We will have First Aiders on site throughout the weekend who will be clearly identifiable.



17th - 18th July 2010, Ripon Cathedral, £5, ages 14-21



Booking

Your Details

Title	
First Name	
Surname	
Address	
County	
Postcode	
Phone Number	
Mobile Number	
Email	

Extra Information for Youth Leaders

CRB Number	
Church/Group	

Payment

Cheques are made payable to 'Harrogate Deanery Synod Youth'

Please send this form with the attached cheque to

Gracefest
21 Crimple Meadows
Pannal
Harrogate
HG1 3EL

Day Tickets	Quantity
Young Person Day Ticket Valid until 23:00 Saturday, and all day Sunday. No camping.	
Youth Leader Day Ticket Valid until 23:00 Saturday, and all day Sunday. No camping.	
Weekend Tickets	Quantity
Young Person Weekend Ticket Valid all weekend. Includes camping.	
Youth Leader Weekend Ticket Valid all weekend. Includes camping.	
Tents	Quantity
How many tents will you be bringing?	
How many people does your tent(s) sleep?	

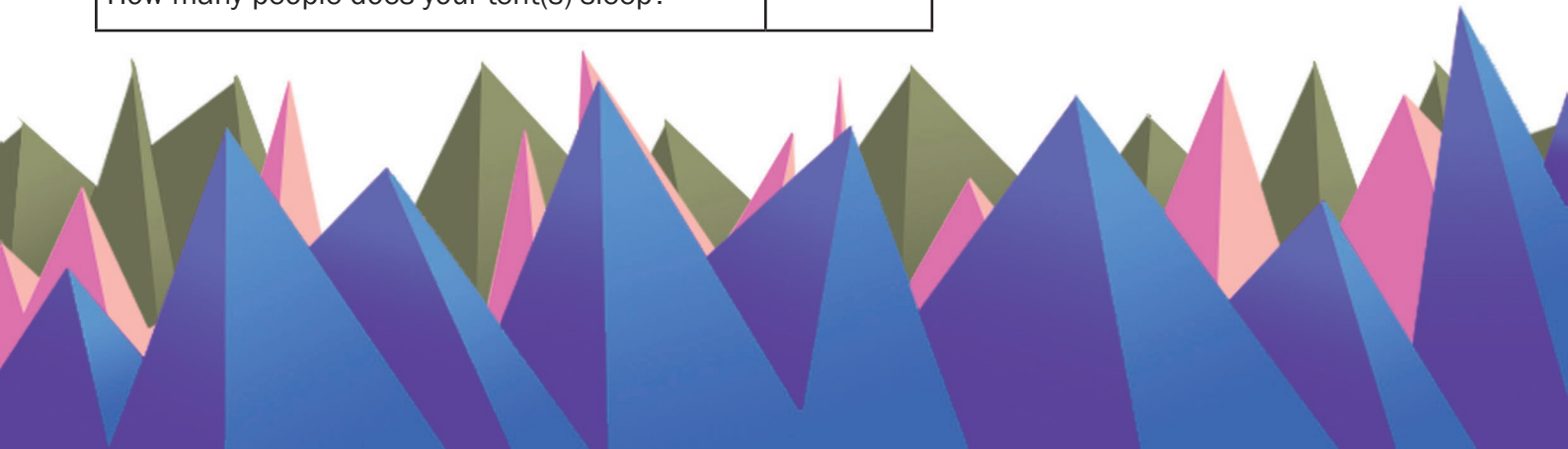
Important Information

You may pay on the door, however if you do not book, we cannot guarantee space on the campsite.

If you intend to camp overnight, we therefore urge you to book in advance. You may still pay on the door if necessary.

The ticket price on the door is £7.

Prebooked tickets cost £5.



17th - 18th July 2010, Ripon Cathedral, £5, ages 14-21

Contact



Web

<http://www.gracefest.org.uk/>

If you are able to help in any way at all, please contact us. We particularly need more staff for the weekend itself.

Email

youthevent2010@hotmail.com

Phone

Archdeacon Janet Henderson: 01765 601316

Revd. Nigel Sinclair: 01423 870202

Address

Gracefest
21 Crimple Meadows
Pannal
Harrogate
HG3 1EL

Also find us on Facebook.





Thankyou for supporting Gracefest 2010

Grace Sinclair & Jason Lowe

<http://www.gracefest.org.uk/>
youthevent2010@hotmail.com

